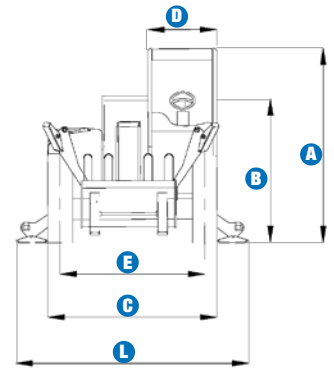
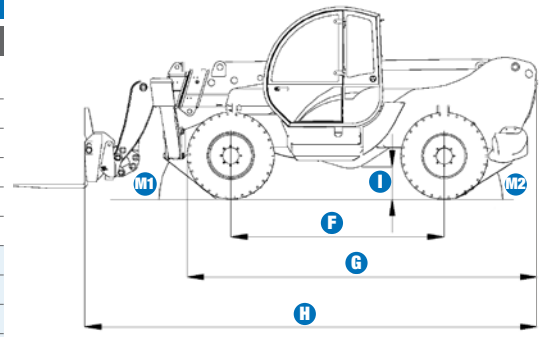


## Specifications

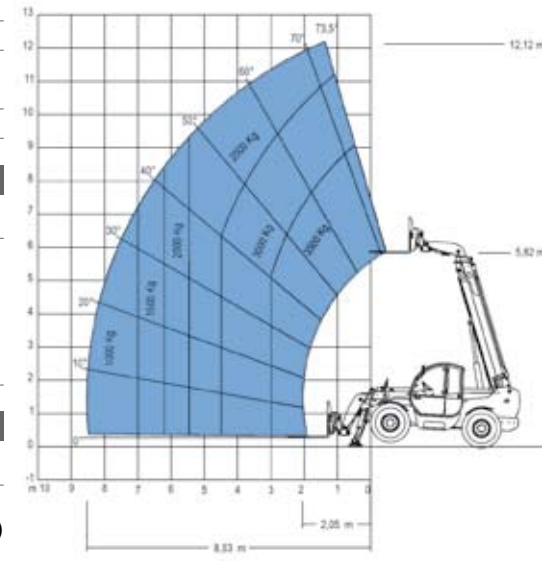
### MODEL GTH-3512

| MEASUREMENTS                                 | Metric   | Imperial    |
|--|----------|-------------|
| Lifting height maximum                       | 12.12 m  | 39 ft 9 in  |
| Lifting capacity maximum                     | 3,500 kg | 7,715 lbs   |
| Lift capacity at maximum height              | 2,500 kg | 5,511 lbs   |
| Lift capacity at maximum reach               | 1,000 kg | 2,204 lbs   |
| Forward reach maximum                        | 8.53 m   | 28 ft       |
| Reach at maximum height                      | 1.17 m   | 3 ft 10 in  |
| <b>A</b> Height                              | 2.45 m   | 8 ft        |
| <b>B</b> Height at steering wheel            | 1.84 m   | 6 ft        |
| <b>C</b> Width                               | 2.25 m   | 7 ft 5 in   |
| <b>D</b> Inside cab width                    | 75 cm    | 2 ft 6 in   |
| <b>E</b> Track                               | 1.85 m   | 6 ft 1 in   |
| <b>F</b> Wheelbase                           | 2.75 m   | 9 ft        |
| <b>G</b> Length at front wheels              | 4.44 m   | 14 ft 7 in  |
| <b>H</b> Length at fork-holder plate         | 5.75 m   | 18 ft 10 in |
| <b>I</b> Ground clearance                    | 43 cm    | 1 ft 5 in   |
| <b>L</b> Overall width, stabilisers extended | 2.93 m   | 9 ft 7 in   |
| <b>M1</b> Obstruction angle                  | 37°      | 37°         |
| <b>M2</b> Departure angle                    | 39°      | 39°         |



### PRODUCTIVITY

|   |                                    |   |
|---|------------------------------------|---|
| Lifting/lowering speed                              | 13 sec./ 8 sec.                    | 13 sec./ 8 sec.                             |
| Extension/retraction                                | 20 sec./ 24 sec.                   | 20 sec./ 24 sec.                            |
| Inside/outside turning radius                       | 2.42 m/4.5 m                       | 7 ft 11 in/ 14 ft 9 in                      |
| Break-out force<br>(with 500 L shovel SAE J 732/80) | 4,500 kg                           | 9,920 lbs                                   |
| Towing capacity at dynamometer                      | 8,200 kg                           | 18,076 lbs                                  |
| Travel speed  | 30 km/h                            | 18.6 mph                                    |
| Fork-holder plate rotation                          | 145°                               | 145°  |
| Floating forks                                      | Length 1200 mm<br>Section 120x45mm | Length 3 ft 11 in<br>Section 5 in x 1.77 in |
| Tyres (DIN 70361)                                   | 405/70-20" PR14 8 holes wheel disc |   |



### POWER

|                           |                                    |                      |
|---------------------------|------------------------------------|----------------------|
| Engine                    | Deutz Turbo Diesel 60 kW (81.5 hp) |                      |
| Tank capacities           |                                    |                      |
| Fuel                      | 92 L                               | 20 gal               |
| Engine oil                | 8 L                                | 1.75 gal             |
| Hydraulic oil             | 90 L                               | 19.8 gal             |
| Hydraulic output/pressure | 80 L/min-280 bars                  | 18 gal/min-4,061 psi |

### WEIGHT

|         |          |            |
|---------|----------|------------|
| Weight* | 9,000 kg | 19,840 lbs |
|---------|----------|------------|

| STANDARDS COMPLIANCE |   |
|----------------------|---|
|                      | Operating cab conforms to ISO3471 (ROPS) and ISO3449 (FOPS) |
|                      | Low emission engine conforms to UE 97/68 directives.        |
|                      | GOST R 50950-96   |

Lift capacity chart (with stabilisers)

EN1459, Annex B

\* Weight will vary depending on options and/or country standards

## Features

### STANDARD FEATURES

#### MEASUREMENTS

- 3,500 kg (7,715 lb) maximum lift capacity
- 12.12 m (39 ft 9 in) maximum lift height
- 8.53 m (28 ft) maximum forward reach

#### PRODUCTIVITY

- 4 x 4
- 4 - wheel steer
- 3 steering modes:
  - front wheel steer
  - crab steer
  - coordinated steer
- Power assisted steering
- Front hydraulic stabilisers
- Two-speed mechanical gearbox
- Hydraulic proportional distributor
- Multifunction proportional joystick hydraulically piloted
- Limited slip differential on front axle
- 405/70-20" tyres
- Floating forks
- Adjustable suspended seat
- Large diameter steering wheel
- Front windscreen wipers
- Front & rear lights
- Oil immersed, multi-disc, self adjusting brakes on both axles
- Lockable fuel tank
- Longitudinal stability control system with load monitor
- Visible display with coloured LEDs
- Audible alarm
- Automatic lock-out of boom extension and lowering
- Control enable switch

#### POWER

- Deutz Turbo Diesel 60 kW (81.5 hp)



### OPTIONS & ACCESSORIES

#### PRODUCTIVITY

- Air conditioning
- Special air filter
- Hydraulic line on boom
- Second hydraulic line on boom
- Attachment holder plate with hydraulic coupling
- Quick coupling for attachments
- Electric pre-arrangement on boom
- Windshield protection grid
- Wiper on cab roof
- Adjustable spotlight
- 405/70-24" tyres
- Spare wheel
- Foam filled tyres
- Water muffler
- 10 ton hydraulic jack and 24 mm wheel nut wrench

#### ATTACHMENT OPTIONS

- Loading shovel 800 L
- Light material loading shovel 2000 L
- Concrete bucket 500/800 L manual/hydraulic discharge
- Concrete mixing bucket 500 L with remote control
- Brick-holder basket
- Fork side shift (+/- 100 mm)
- FEM 3 plate and forks kit
- Fixed hook on plate
- 4 m jib, 900 kg capacity
- 4 m jib with 900 kg capacity hydraulic winch
- Hydraulic winch 3000 kg

### European Offices

#### UK

The Maltings  
Wharf Road  
Grantham NG31 6BH  
UK  
Tel: +44 (0)1476 584333  
Fax: +44 (0)1476 584334

#### France

10, ZA de la Croix St. Mathieu  
28320 Gallardon  
France  
Tel: +33 (0)2 37 26 09 99  
Fax: +33 (0)2 37 26 09 98

#### Germany

Finienweg 3  
28832 Achim/Bremen  
Germany  
Tel: +49 (0)4202 8852-0  
Fax: +49 (0)4202 8852-25

#### Spain

Gaià 31, Pol. Ind. Plà d'en Coll  
08110 Montcada i Reixac  
Barcelona  
Spain  
Tel: +34 93 572 50 90  
Fax: +34 93 572 50 91

#### Scandinavia

Tagenevägen 72  
425 37 Hisings Kärra  
Sweden  
Tel: +46 31 57 51 00  
Fax: +46 31 57 90 20

### Genie United States

18340 NE 76th Street  
P.O. Box 97030  
Redmond, Washington 98073-9730  
USA  
Tel: +1 425 881-1800  
Fax: +1 425 883-3475

**WEB:** [www.genieindustries.com](http://www.genieindustries.com)  
**Email:** [infoeurope@genieind.com](mailto:infoeurope@genieind.com)

### Distributed By: